



# **Display Mounting Arm Installation Instructions**

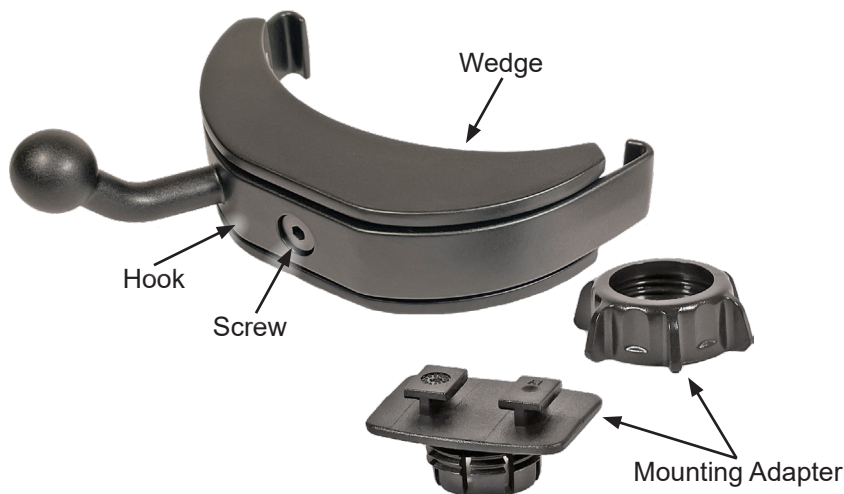
**2001-2007 GM**

---

## Materials

---

### 2001-2007 GM



---

## Required Tools

---

1/8" Allen Wrench

---

## Mounting Arm Installation

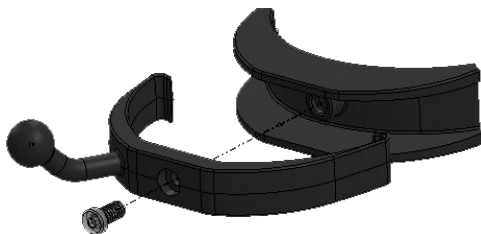
---

**STEP 1** - Carefully remove the driver's side A-pillar trim by pulling the interior trim away from the A-pillar.

**STEP 2** - Using a 1/8" allen wrench, loosen the screw on the hook portion of the mount until it's only a few threads in.

**STEP 3** - Peel back one corner of the backing on the adhesive and slide both pieces of the mounting arm over the A-pillar trim. Make sure that the claws are around the entire trim piece on both sides.

**NOTE:** Do not remove adhesive backing yet.



---

## Mounting Arm Installation Cont'd

---

**STEP 4** - Once the mount is positioned approximately where shown in the image below, remove the rest of the adhesive backing and press the mount firmly against the A-pillar. Then, reinstall the trim piece back onto the A-pillar.

**STEP 5** - Take the mounting adapter out of the bag and snap it over the ball on the mounting arm. **NOTE:** *If the nut won't go onto the ball, the two pieces of the mounting adapter may need to be loosened.*

**STEP 6** - Attach your device to the dual tab and secure the cord. Adjust the device position using the mounting bolt and/or dual tab/nut. Once positioned, tighten the nut on the mounting adapter until secure.



**NOTE:** *If any of your clips holding the A-pillar trim in place are missing or broken, they may need to be replaced or the A-pillar trim may need to be secured with a screw. The added weight of the mount and display may cause the trim to fall off if the trim isn't secured.*

*For additional questions not found in the user guide, call:*

**Holley Technical Support: (888)-360-3343**

Mon - Fri 8:00 am - 5:00 pm MST, Sat 8:00 am - 2:00 pm MST

**To expedite your support call, please have your Vehicle Information,  
Part Number, and Serial Number ready prior to calling Technical Support.**

**Holley**<sup>®</sup>  
TUNING GROUP

© Copyright 2023 Holley Inc. and subsidiaries. All rights reserved.

D10030400 Rev00 03/15/2023